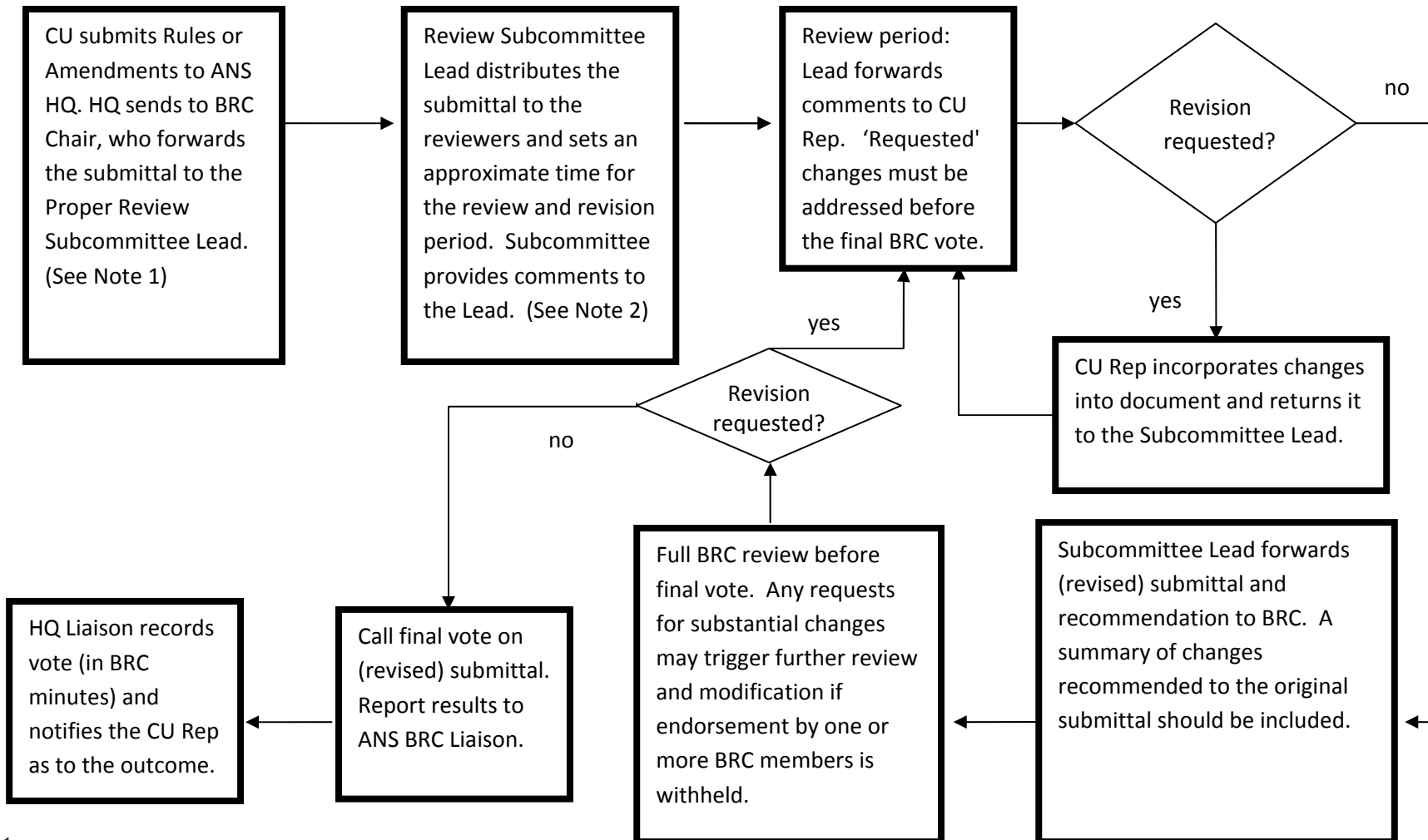


**BRC Workflow for Reviewing
Constituent Unit Rules or Rule Amendments
August 20, 2010**

**HQ refers to the ANS BRC Liaison
BRCC: Bylaw & Rules Committee Chair
Review Subcommittee Lead also acts as the Point of Contact for the
Constituent Unit.**



¹ The BRC Chair may appoint a different Review Committee Lead for each submittal to be reviewed, possibly a BRC member who is also a member of the respective CU. The Lead 'owns' the review and resolution process; guiding the resolution of comments and communicating with the CU Rep.

² 'Comments' can be either 'suggestions' or 'requests' for additions, deletions, or clarifications. A BRC member may 'suggest' a change but does not require its acceptance for endorsement. Acceptance of a 'request' for addition, deletion, or clarification is required for an affirmative vote of endorsement by the requestor.